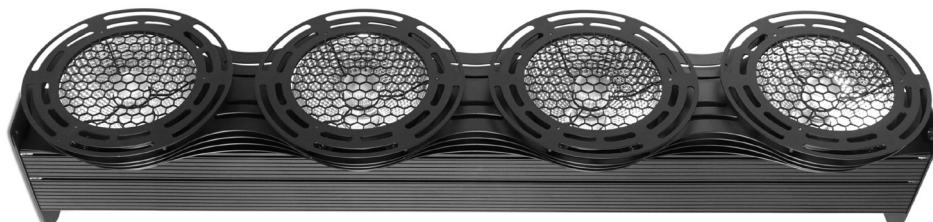


**Product code:** P7300004

**JETO Sunax 14x30W 4in1 COB RGBW  
4 Sctions Mk2**


TECHNICAL DATA	
Power consumption	154W
Power supply voltage	100 - 245V
Voltage frequency	50/60Hz
Diode type	4w1
Number of diodes	4
Diode power	30W
Display	Color LCD
UTILITY DATA	
Color	RGBWA
Color rendering index (CRI)	78
Dimming	Linear: 0 - 100%
Number of DMX channels	21 trybów (6-32 kanałów)
DMX Standard	DMX 512
Control interface	4 buttons
Operating modes	DMX512, Auto, Sound-controlled, Master / Slave
INTERFACES	
AC IN	powerCON
AC OUT	powerCON
DMX IN	XLR - 3 pin
DMX OUT	XLR - 3 pin
PHYSICAL CHARACTERISTIC	
IP Rating	IP20
Cooling	Active
Housing made	ABS + Steel
Height [cm]	85
Width [cm]	18
Depth [cm]	18
Packing size [cm]	92x24x24
Weight [kg]	6,6
Weight with packaging [kg]	7,8
Type of packaging	Carton Box